

# MONTAGEANLEITUNG

DOPPELGARAGE



GRUPPE

QUALITÄT FÜR HÖCHSTE ANSPRÜCHE



DEUTSCHER  
QUALITÄTSSTANDARD



KOSTENLOSE LIEFERUNG  
DEUTSCHLANDWEIT!

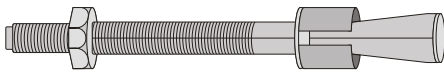
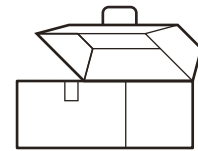
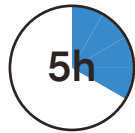
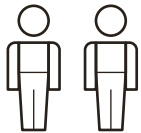
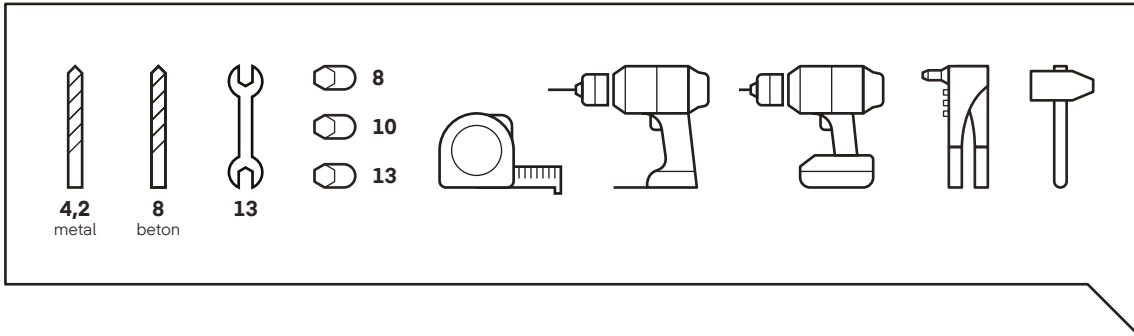
\*AUSGENOMMEN INSELN



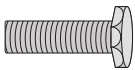
Geprüftes  
Onlineportal  
Informationsservice

tuev-saar.de/5C43356

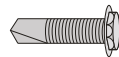
BAUDISCOUNT  
ZERTIFIZIERTES  
ONLINEPORTAL



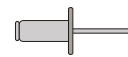
D8\*75



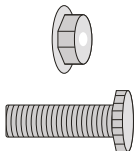
M8\*16



4,8\*19



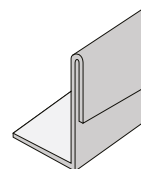
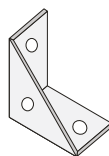
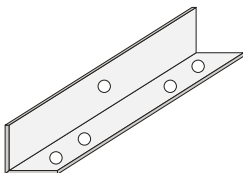
4\*8



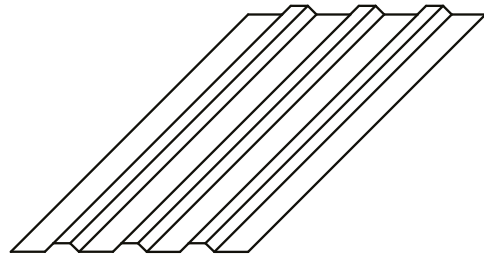
M8\*15,5



UPDM 14



**T18** Dachblech



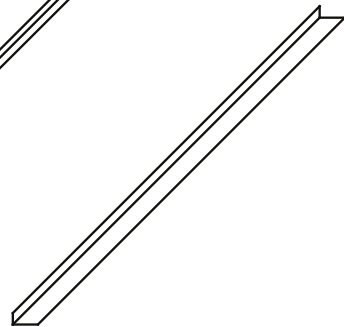
**BM** Zierblende



**BDL BDF BDR** Dachblende



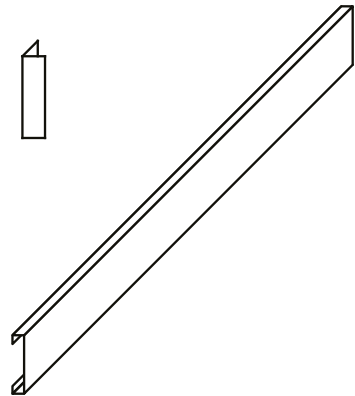
**KDR KDL KDF** Dachwinkel



**BN** Eckblende



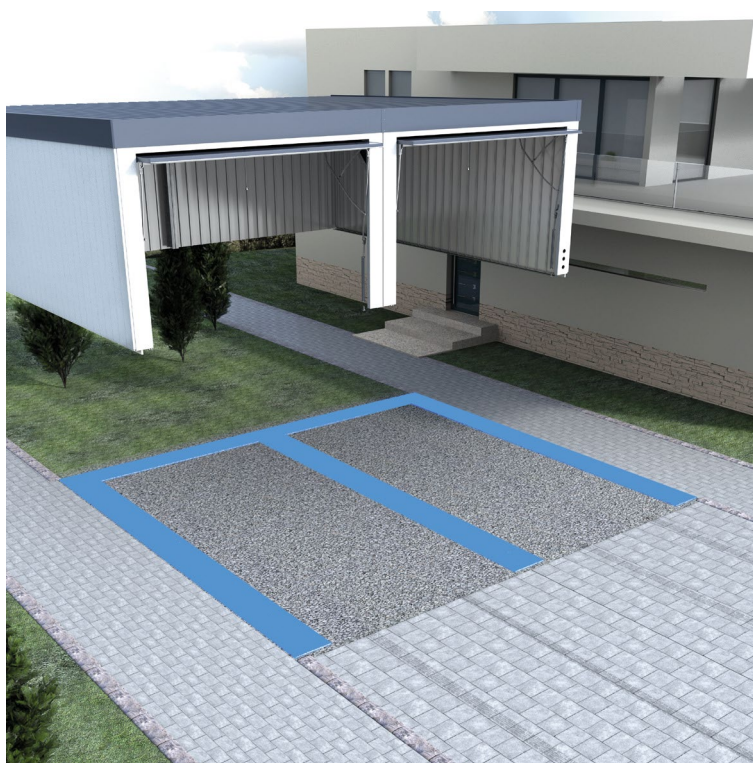
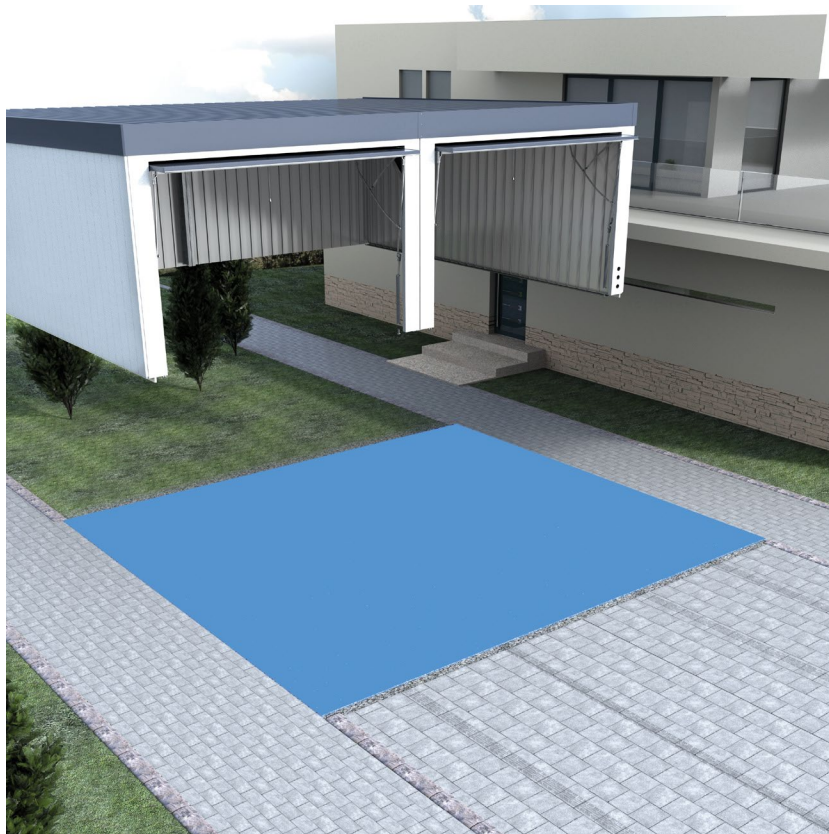
**Z** Dachbalken (C-Träger)



Die Fachgerechte Montage sollte durch einen Zertifizierten Montagebetrieb erfolgen.

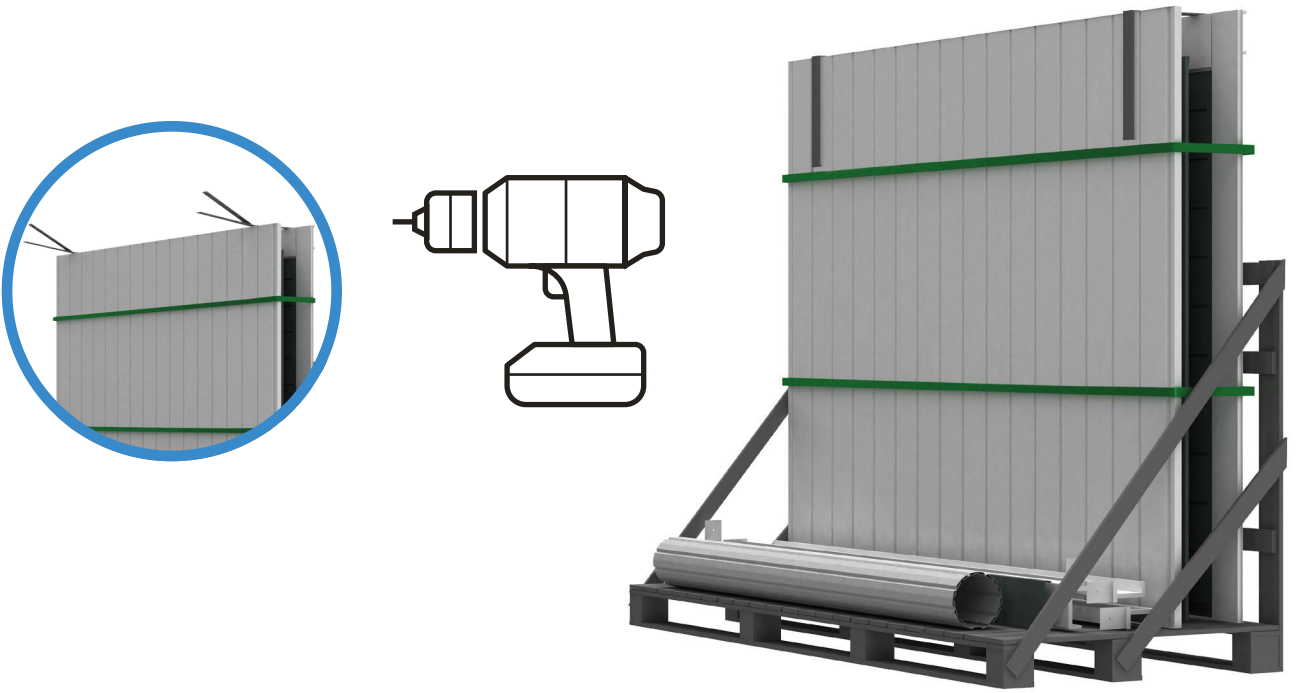
Sollten Sie die Montage in Eigenverantwortung durchführen, halten Sie sich an die in der Anleitung und in dem Montage Video beschriebenen und gezeigten Arbeitsschritte.

Voraussetzung für die fachgerechte Montage ist ein nach DIN erstelltes frostsicheres Fundament.

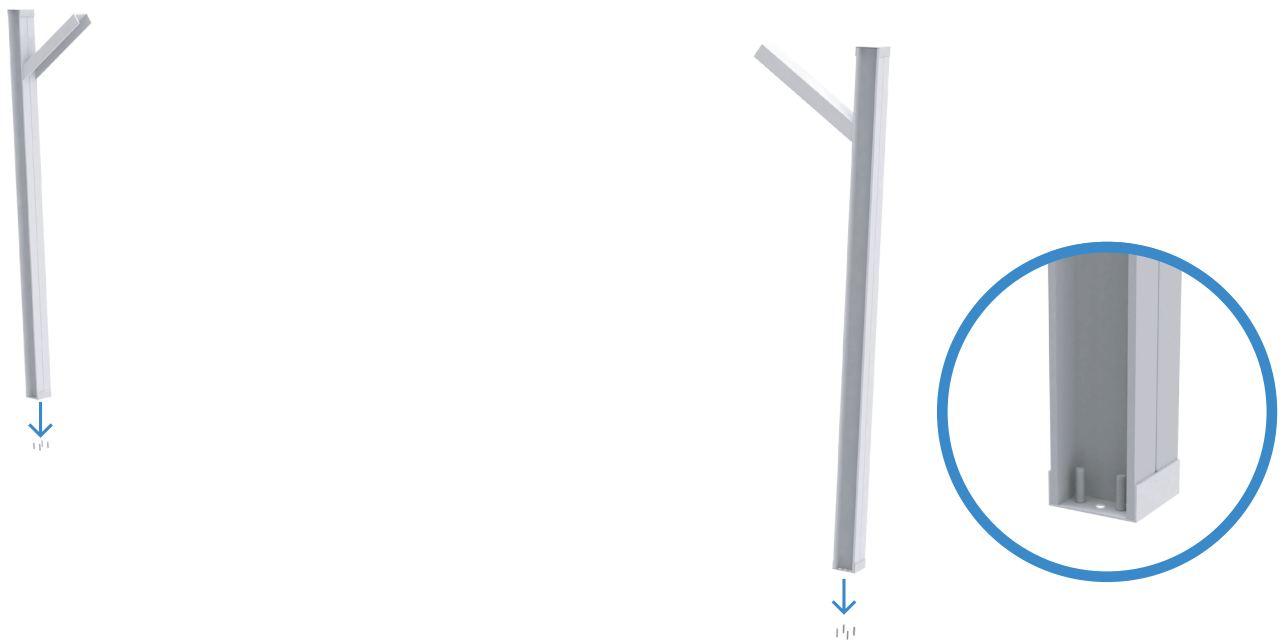


Die Montage der einzelnen Wandelemente muss nach Herstellervorgabe erfolgen.

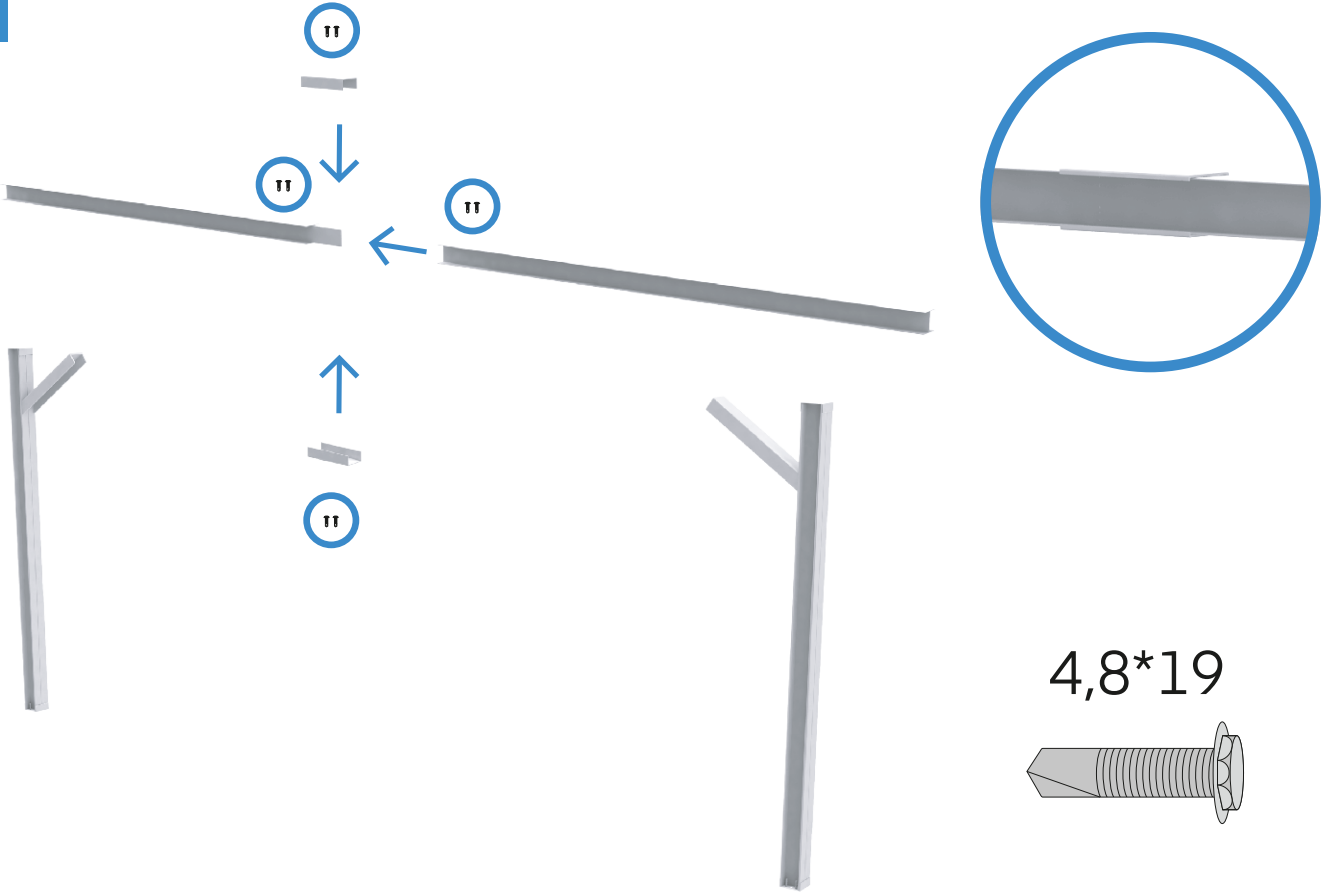
1



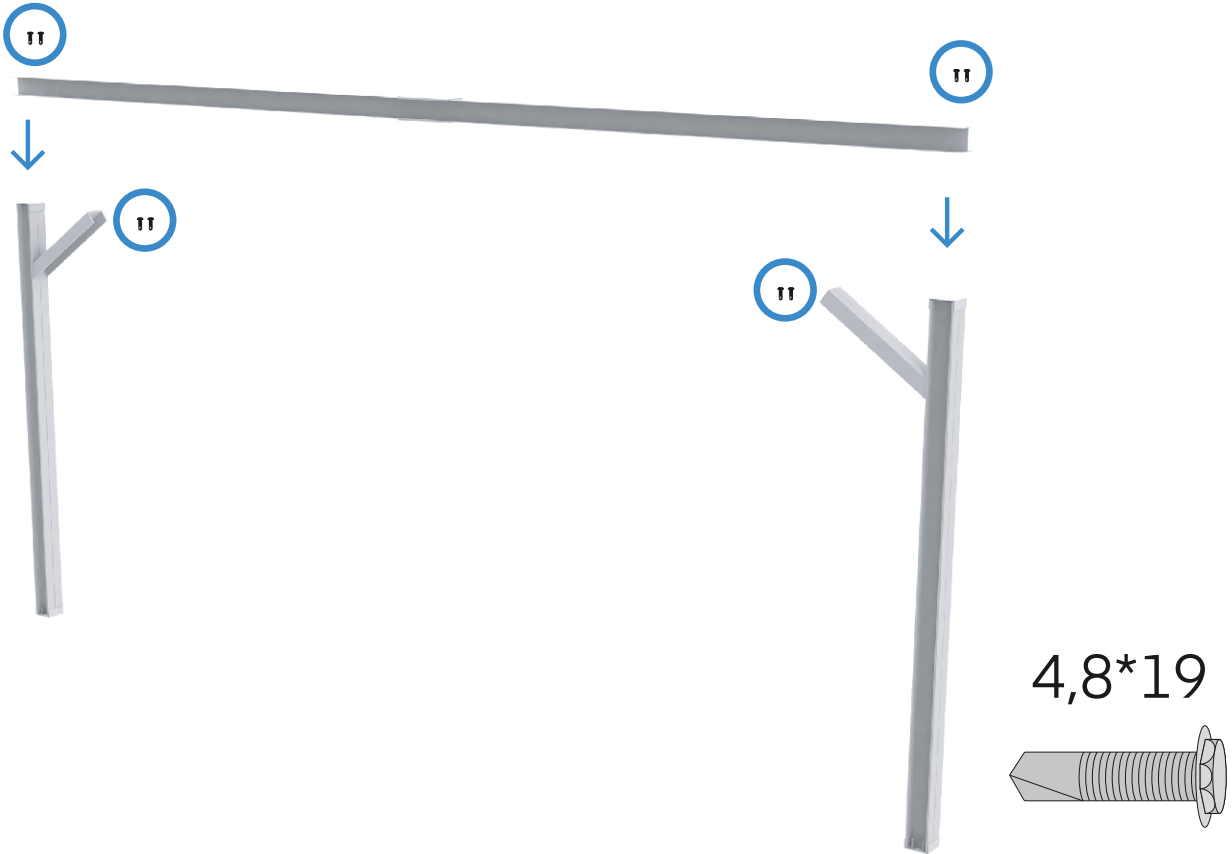
2



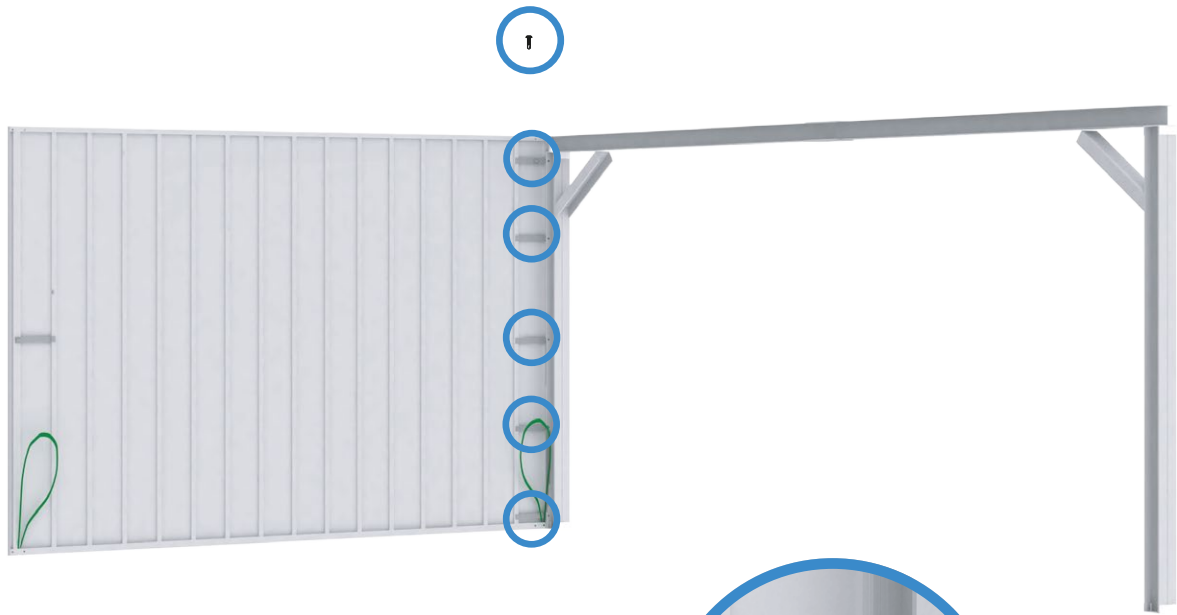
3



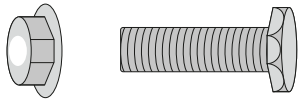
4



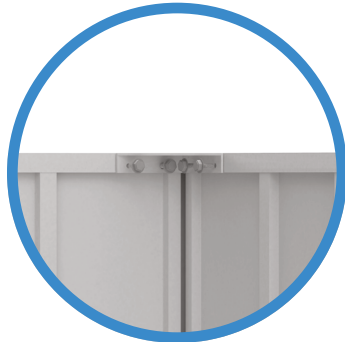
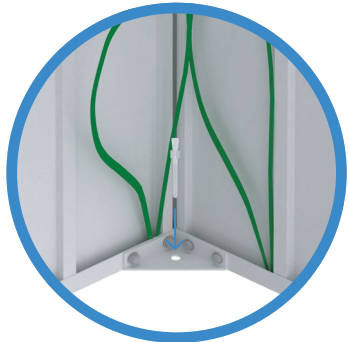
5



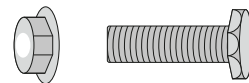
M8\*15,5 + Schraubenmutter



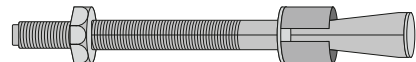
6



M8\*16 + Schraubenmutter



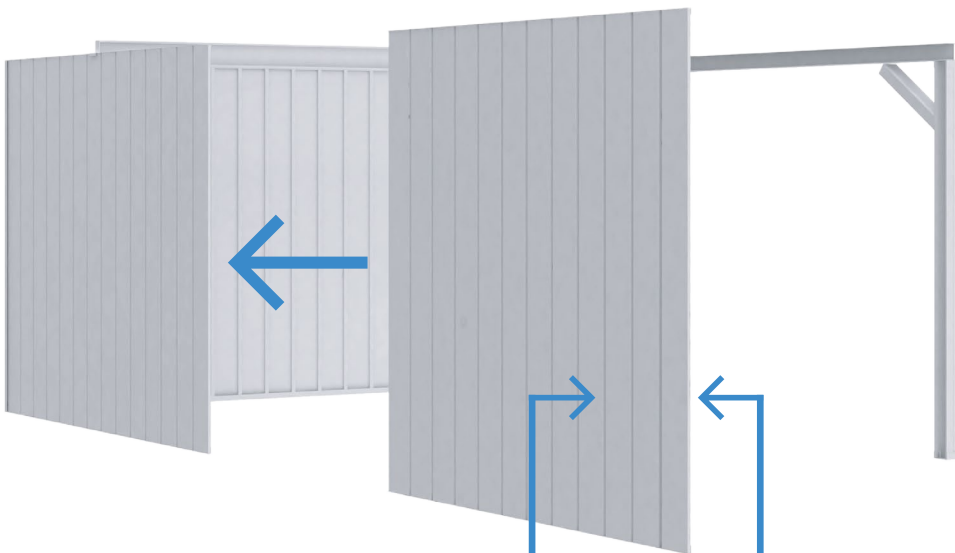
D8\*75



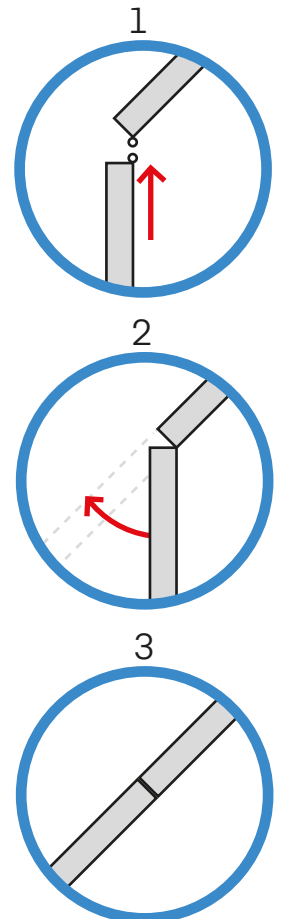
7



8

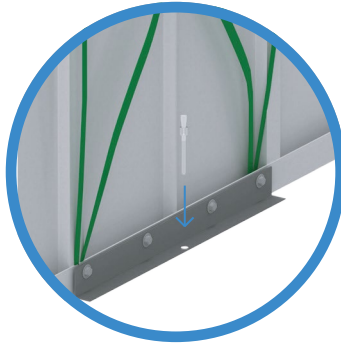
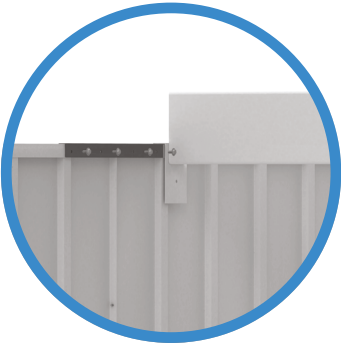


Garagenwand während  
der Montage von beiden  
Seiten abstützen!

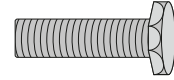




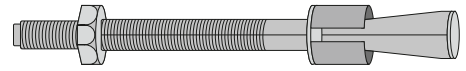
9



M8\*15,5



D8\*75



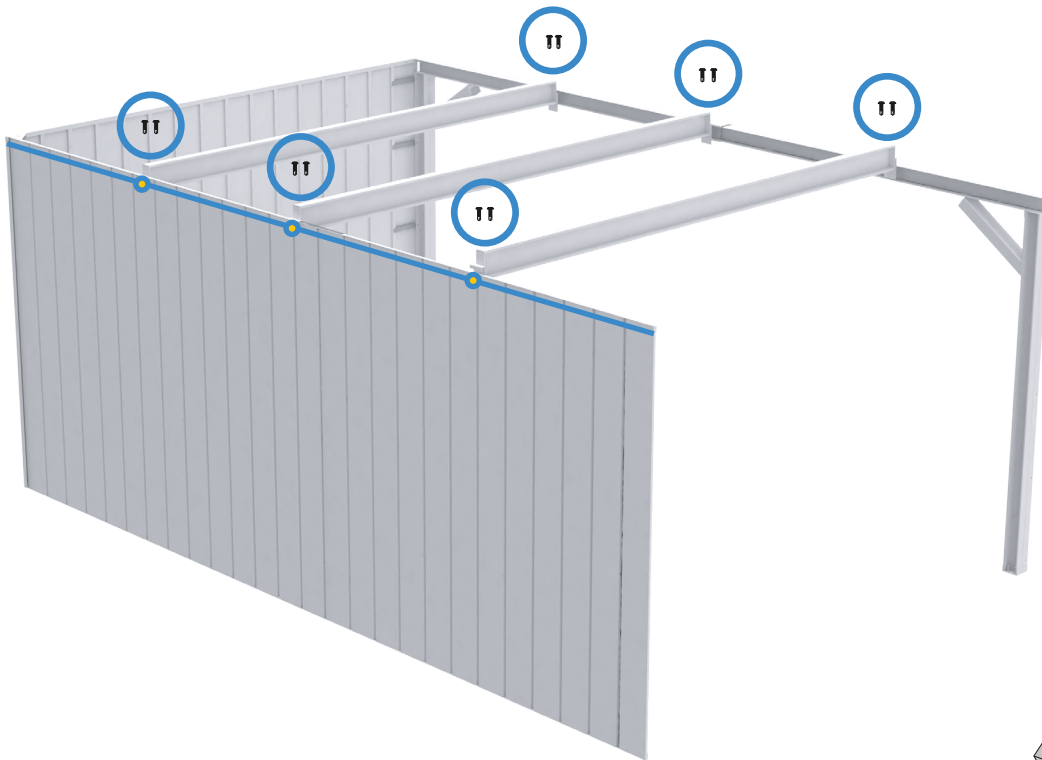
10



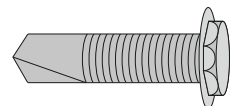
11



12



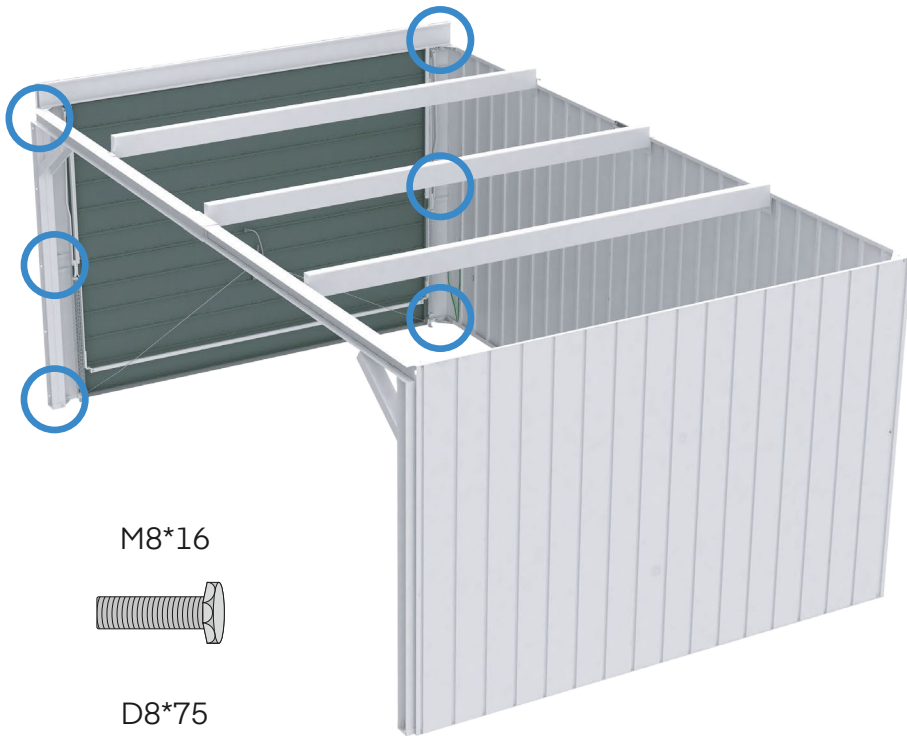
4,8\*19



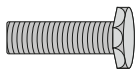
13



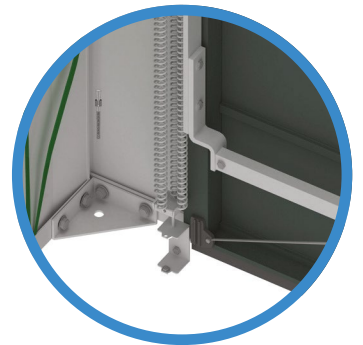
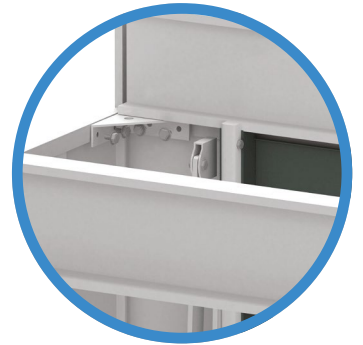
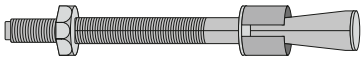
14



M8\*16



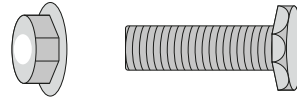
D8\*75



15



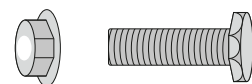
M8\*15,5 + Schraubenmutter



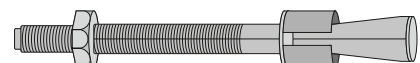
16



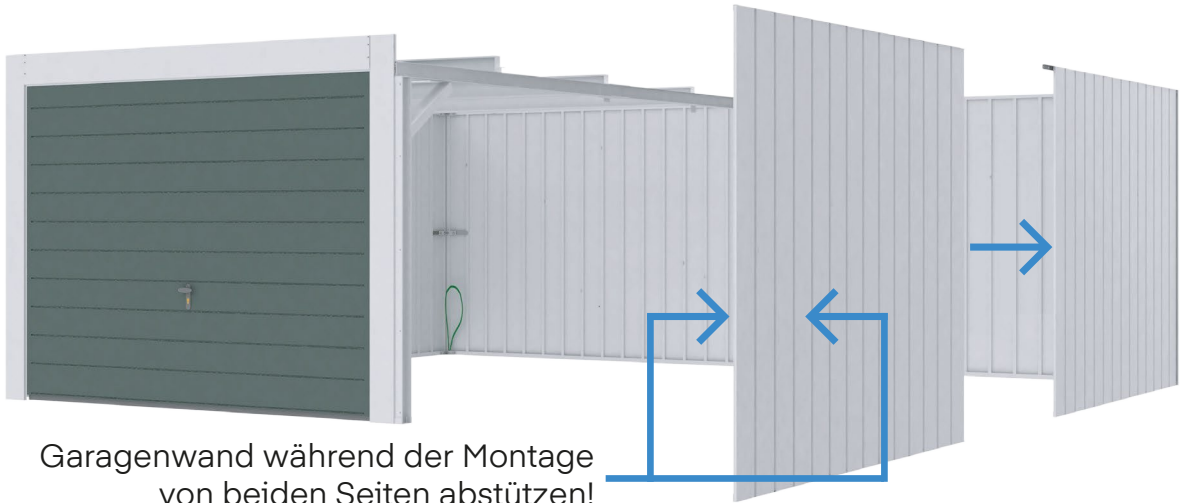
M8\*16 + Schraubenmutter



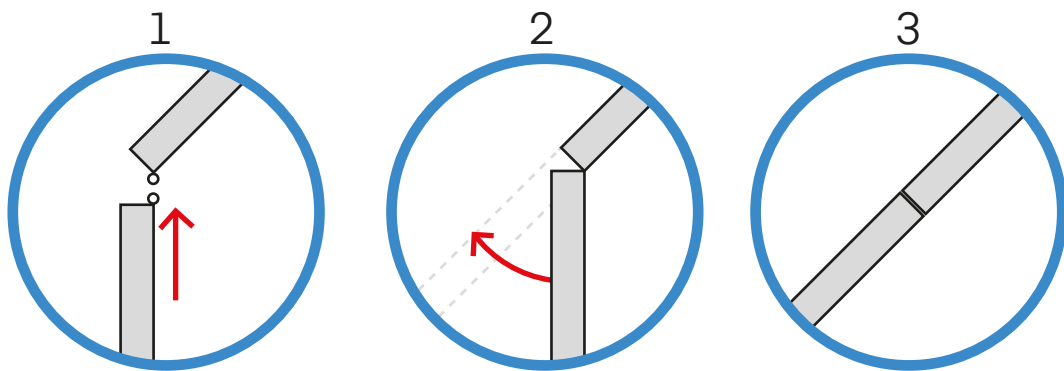
D8\*75



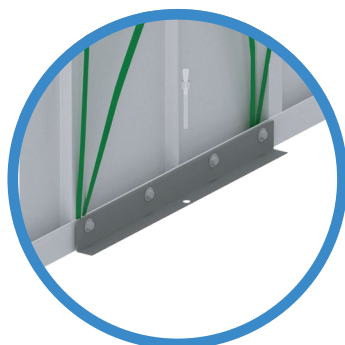
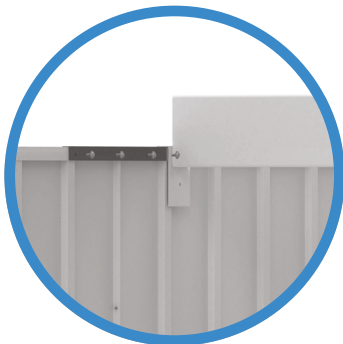
17



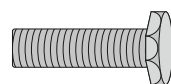
Garagenwand während der Montage von beiden Seiten abstützen!



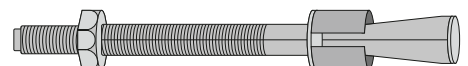
18



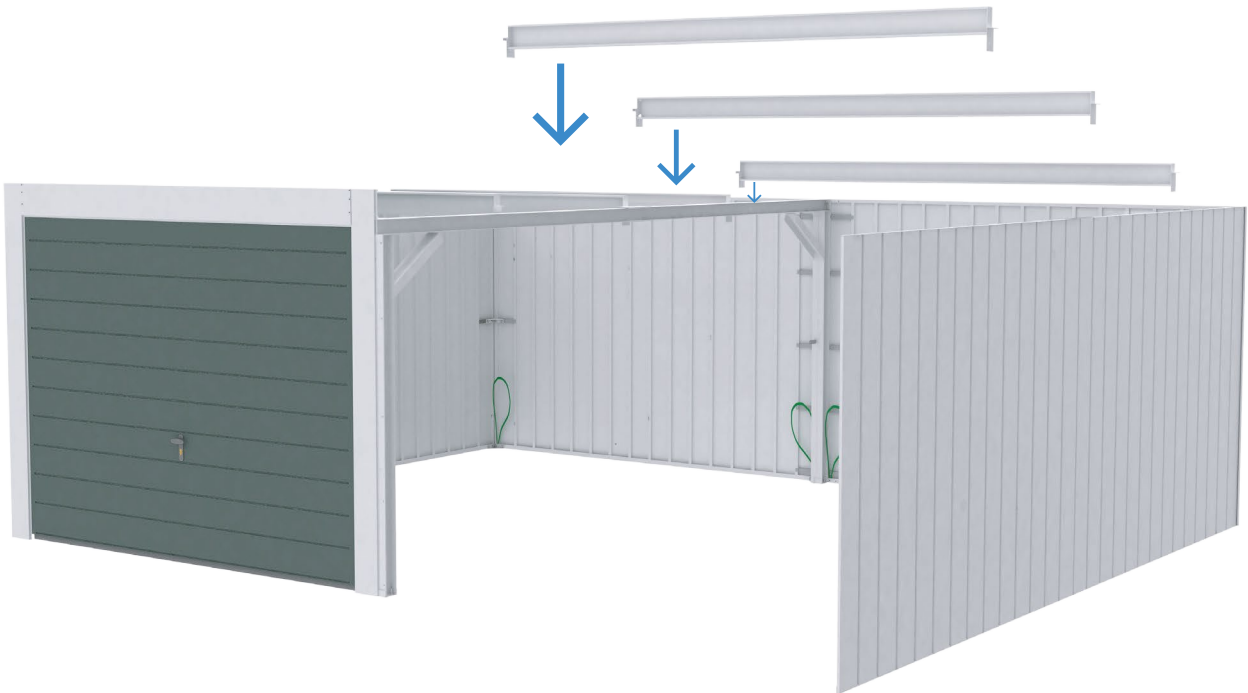
M8\*15,5



D8\*75

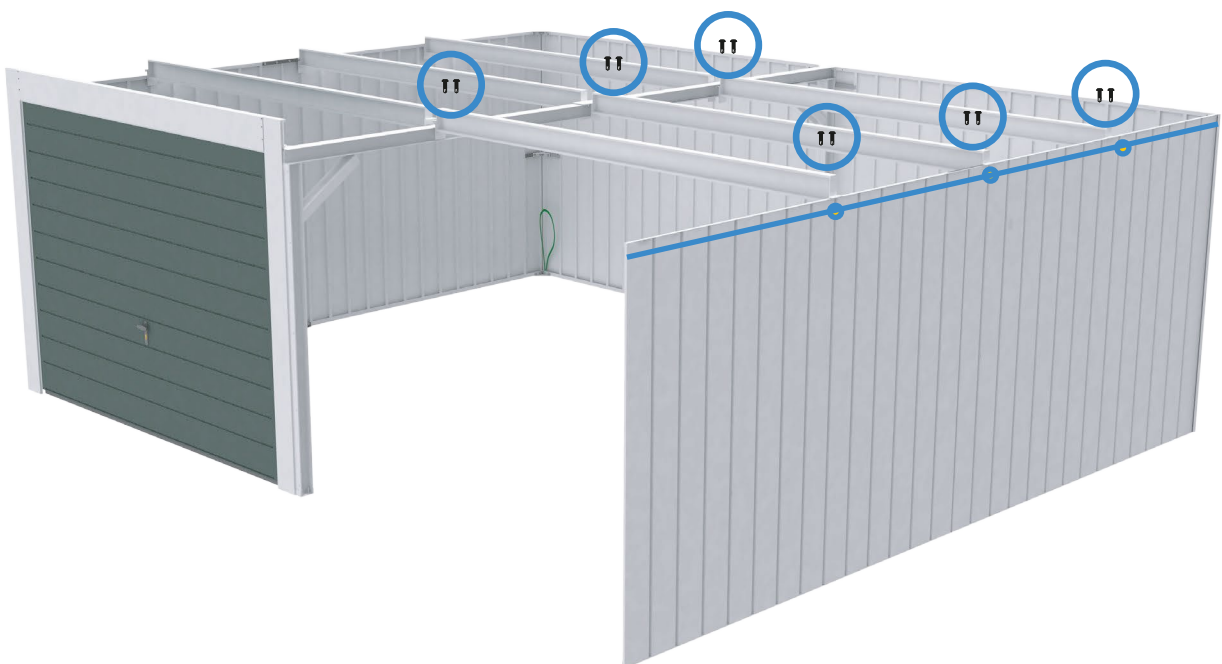
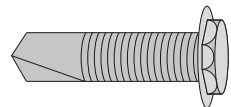


19

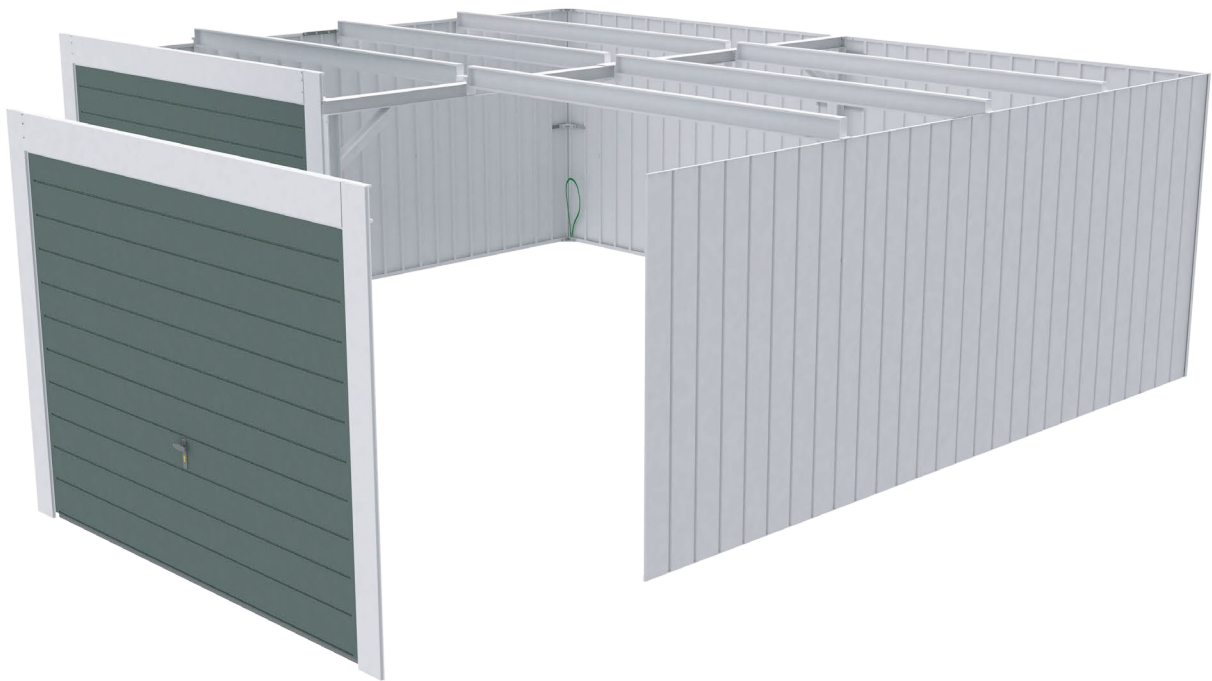


20

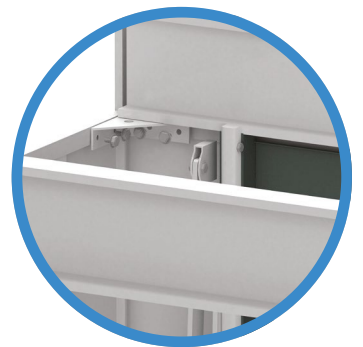
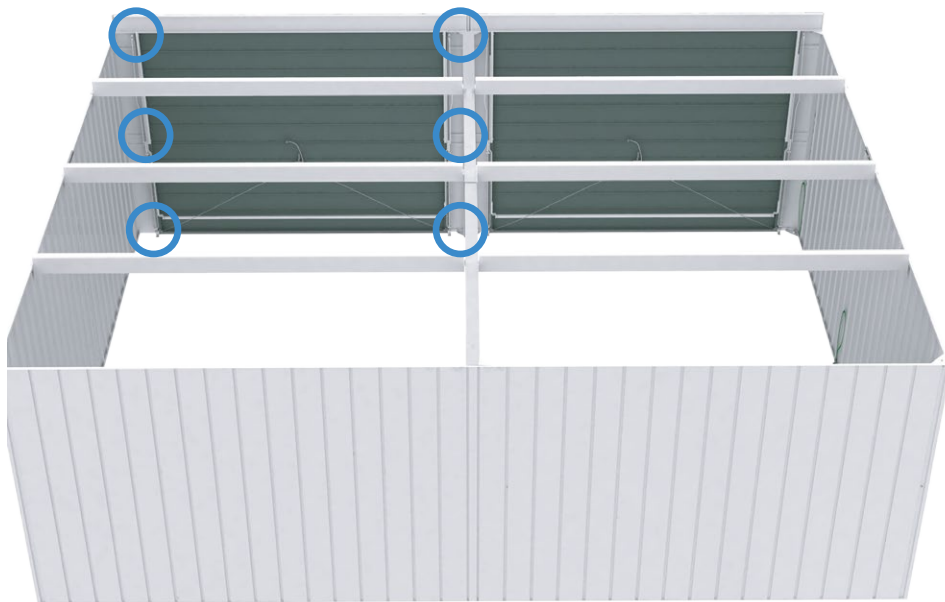
4,8\*19



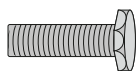
21



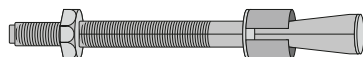
22



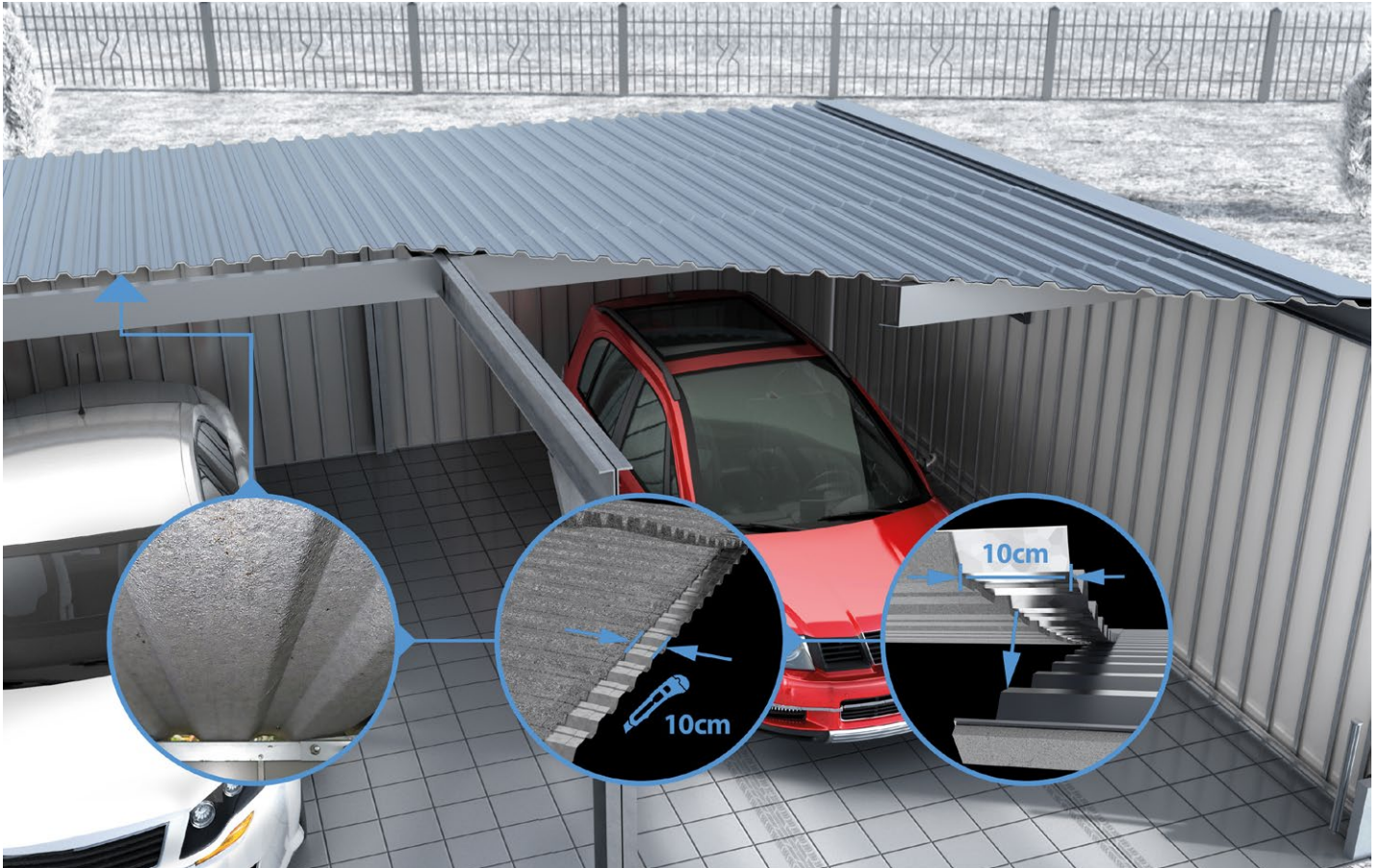
M8\*16



D8\*75



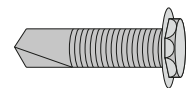
**Achtung wichtig! - bei der Ausführung mit Antikondensvlies.**



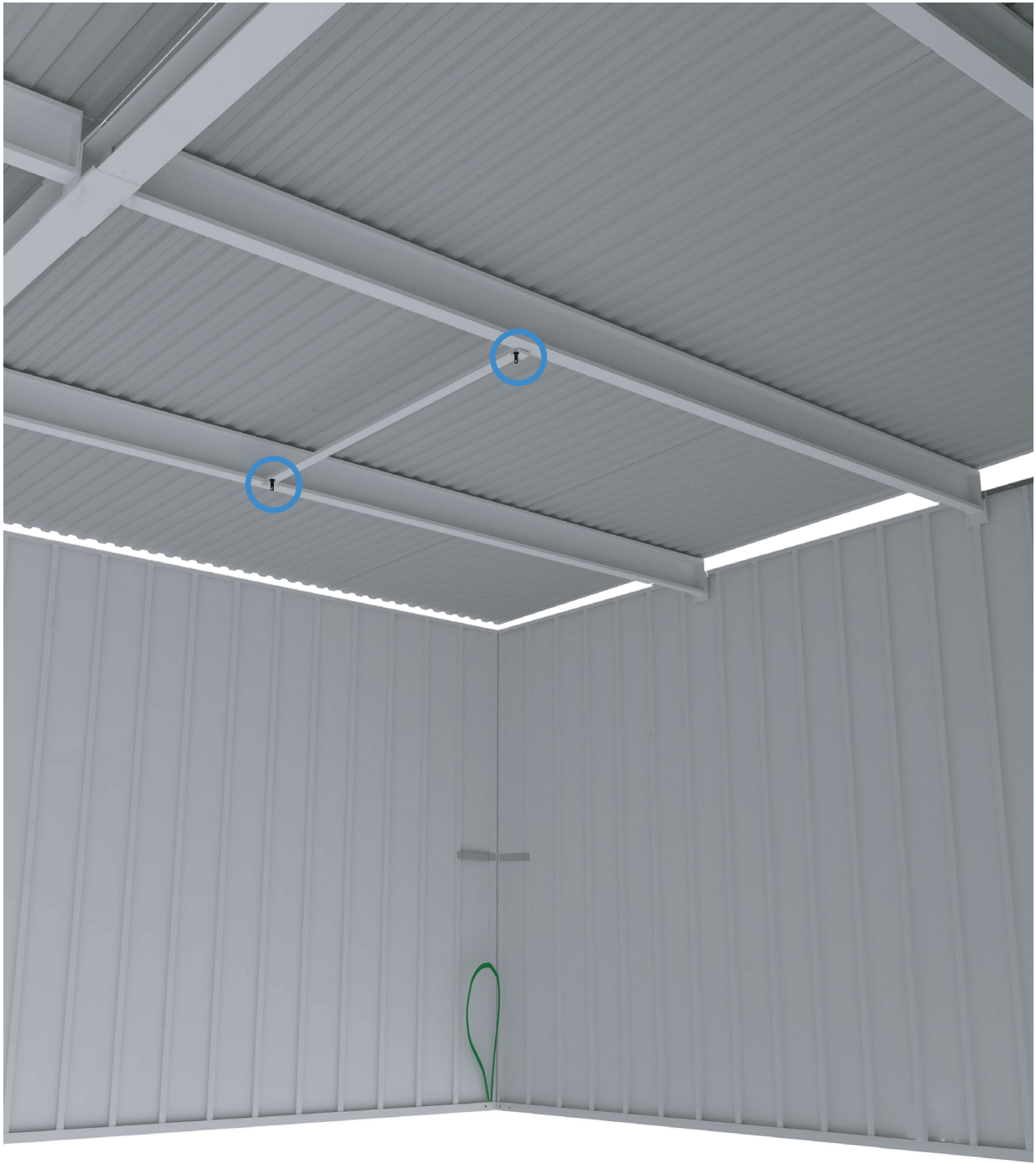
23



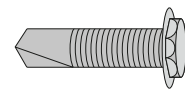
4,8\*19





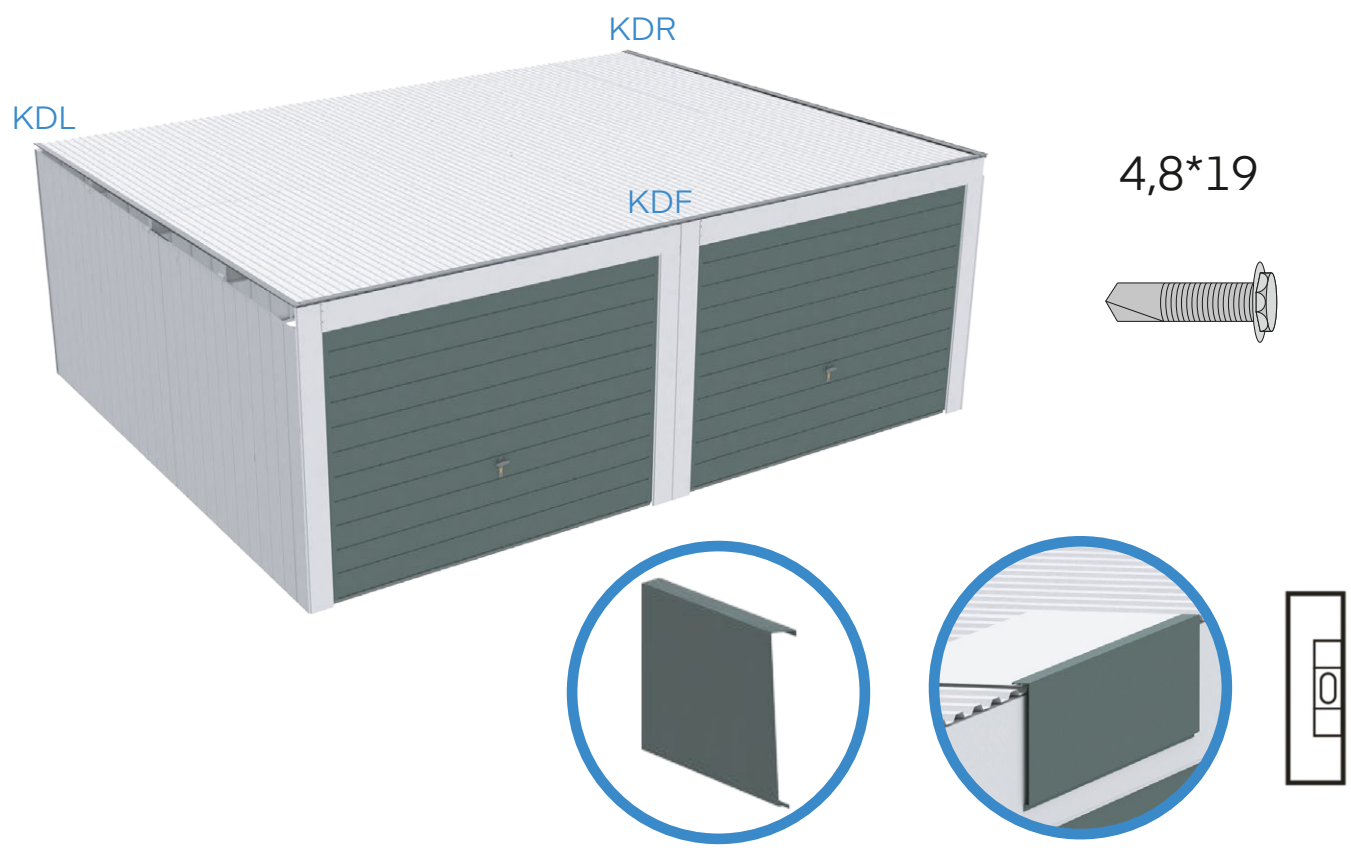


4,8\*19

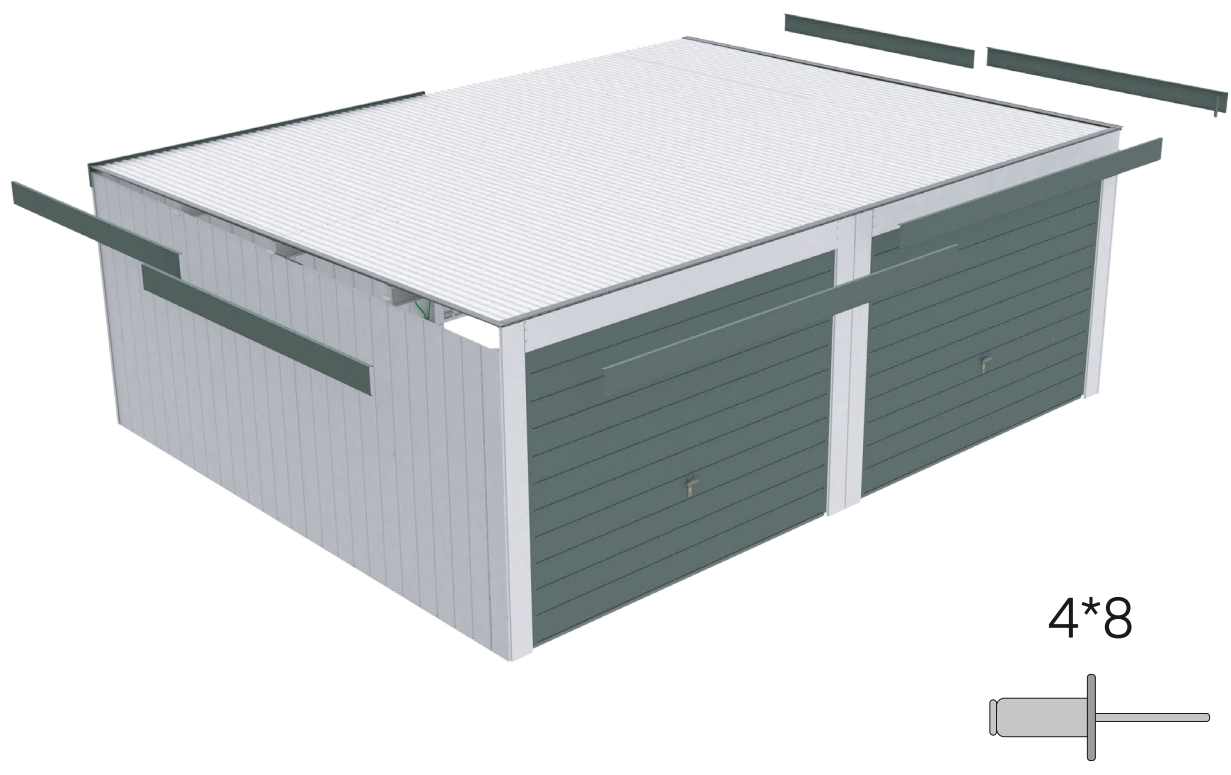


25

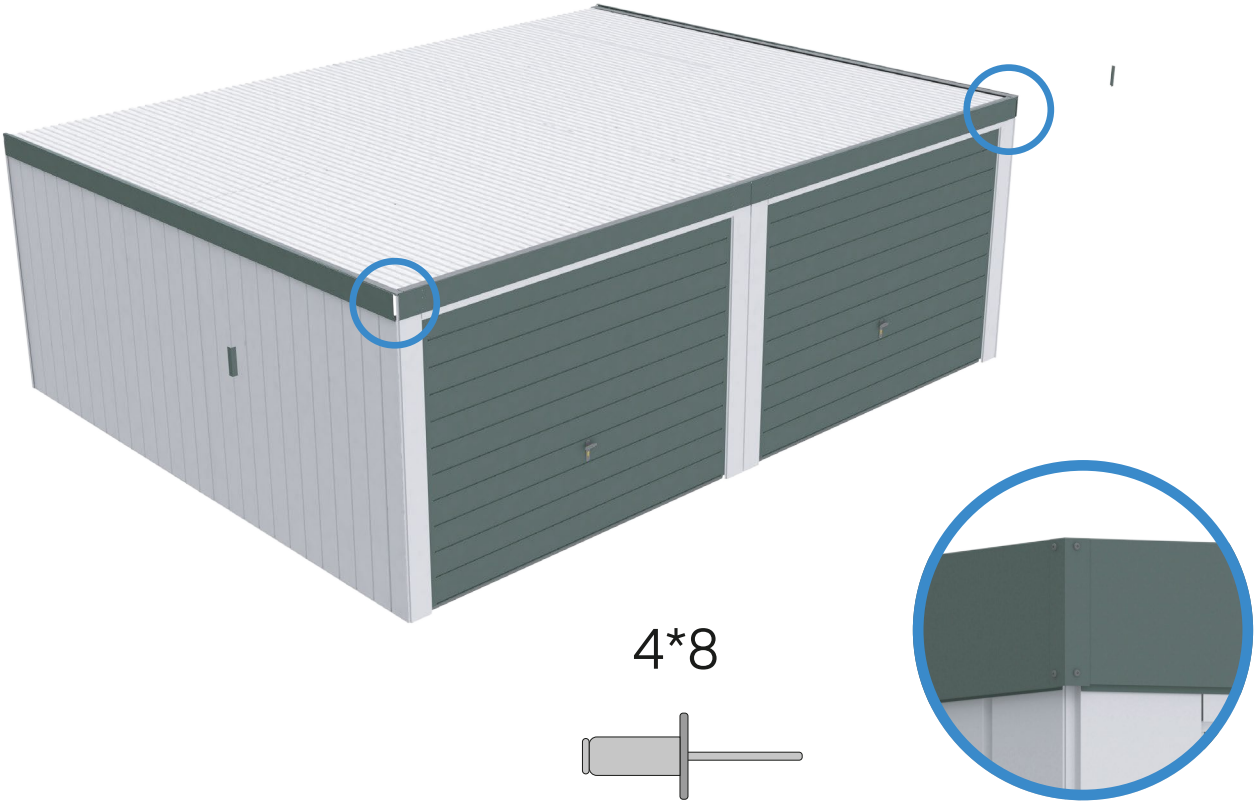
Vorläufige Zierblende zur Positionsbestimmung.



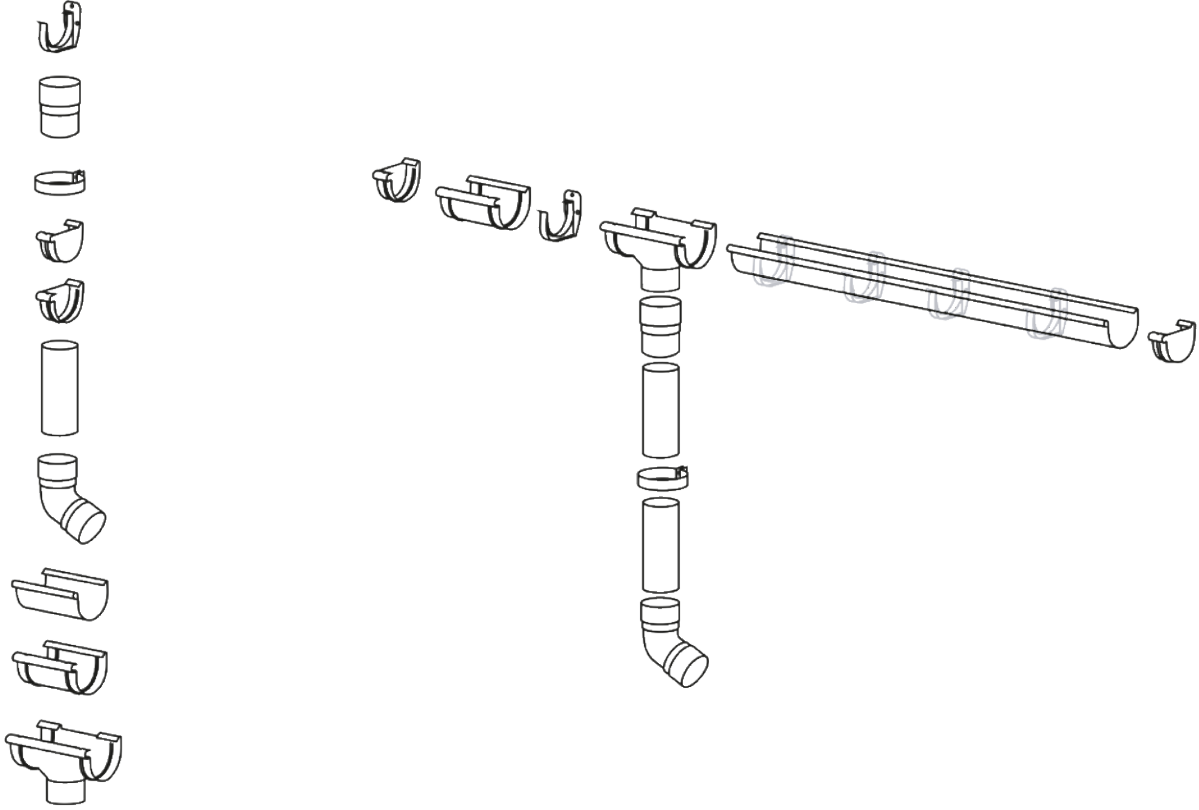
26



27



28



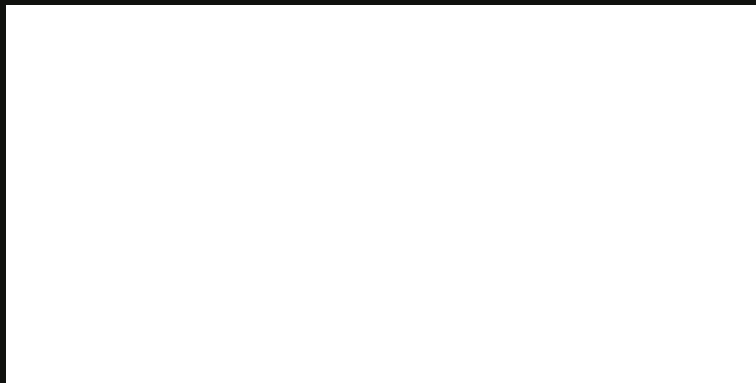




**GRUPPE**

QUALITÄT FÜR HÖCHSTE ANSPRÜCHE

PF GRUPPE FACHHÄNDLER:



EUROPAWEITER VERTRIEB DURCH DIE



**Baustoff-Euro-Trade**  
GmbH